

Caring Science in Action

The Clinic (Re)Brilliancy In-Person Workshops



(Re)Brilliancy

Remembering and honoring the brilliant and resilient human beings we already are.

The (Re)Brilliancy Workshops are designed as an artistic experience for nurses to feel seen, heard, and cared for. Through play, movement and the arts, nurses connect to themselves and others as they redefine resilience and experience a deep sense of community and care.

Ultimately, we are celebrating and honoring our collective humanity as we lean into the brilliant and resilient nurses we already are.

8 HOUR IN-PERSON WORKSHOPS

7 CONTACT HOURS



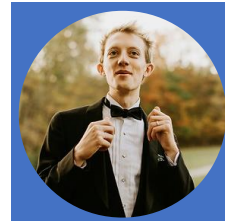
Tara Rynders RN
MFA, BSN, BA



Ashley Cornelius
LPC & Poet Laurette



The Clinic
Performance



Dr. Clare Hammor
EdD, MA, BA



Maria Schimpf
MA, MT-BC

Open to all Kaiser Permanente RNs! Spaces are limited. This is a 1-day workshop.

[Register for one date now!](#)



June 6 or June 7
Endowment Center
Laurel Conference Room
2000 Franklin Street, Oakland, CA

Parking is available across the street from Regional Offices (1950 Franklin Street)



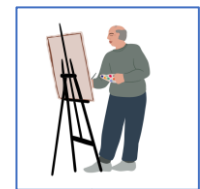
September 11 or September 12
Santa Clara Medical Offices
Conference Room A1-4
710 Lawrence Expressway, Santa Clara, CA



play



movement



the arts

SCAN HERE



Kaiser Foundation Health Plan, Patient Care Services is an approved provider by the California Board of Registered Nursing. Provider # CEP 2365. Each Workshop is approved for 7.0 Contact Hours. CEs Collected through HealthStream.

[Video of The Workshop in Action](#)

www.theclinicperformance.com

Register via QR Code or link below now!

<https://forms.office.com/r/DWCpqvgfED>